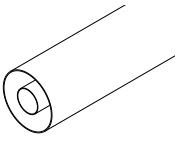


7/8", WX-20D Rigid Line Components

Rigid Line



FEATURES

- Available in Aluminum-Copper and Copper-Copper (On Request)
- 2 or 4 m (6.6 or 13.1 ft) lengths
- Rigid Line cutter available on request

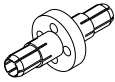
SPECIFICATIONS

Max RMS Power ⁽³⁾		Default	Painted ⁽²⁰⁾
	UHF	2.2 kW	2.7 kW (700 MHz)
	VHF B.III	3.8 kW	4.7 kW (230 MHz)
	VHF B.I	6.1 kW	7.6 kW (88 MHz)
	FM	5.5 kW	6.9 kW (108 MHz)
Outer Conductor	High Conductivity Aluminum (Default) High Conductivity Copper (On Request)		
Inner Conductor	High Conductivity Copper (ETP)		
Environmental Conditions	-5 to +55°C (+23 to +131°F), IP60		
Distance Between Inner Supports	0.8 m (2.6 ft)		
Available lengths	2 or 4 m (6.6 or 13.1 ft)		
Code	D-RL23O	7/8", WX-20D Rigid Line Outer (Al)	
	D-RL23CO	7/8", WX-20D Rigid Line Outer (Cu)	
	D-RL23I	7/8", WX-20D Rigid Line Inner	

⁽³⁾ Altitude < 1500 m (4,900 ft.), Free air, Ambient temp. < 30 °C (86 °F)

⁽²⁰⁾ Provided unpainted; to be painted by Customer after installation

Inner Support



FEATURES

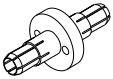
- Required to sustain the inner conductor in long Rigid Line sections

SPECIFICATIONS

Max RMS Power ⁽³⁾	UHF	2.7 kW	(700 MHz)
	VHF B.III	4.7 kW	(230 MHz)
	VHF B.I	7.6 kW	(88 MHz)
	FM	6.9 kW	(108 MHz)
	Return Loss (VSWR)	> 40 dB (1.02)	
Environmental Conditions	-5 to +55°C (+23 to +131°F), IP60		
Distance Between Inner Supports	0.8 m (2.6 ft)		
Code	D-IS23G	7/8", WX-20D Inner Support	

⁽³⁾ Altitude < 1500 m (4,900 ft.), Free air, Ambient temp. < 30 °C (86 °F)

Inner Connection



FEATURES

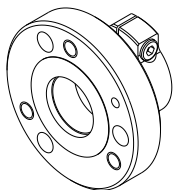
- Required to connect two Flange connections
- Includes screw-set for the relative Flange connections

SPECIFICATIONS

Max RMS Power ⁽³⁾	UHF	2.7 kW	(700 MHz)
	VHF B.III	4.7 kW	(230 MHz)
	VHF B.I	7.6 kW	(88 MHz)
	FM	6.9 kW	(108 MHz)
	Return Loss (VSWR)	> 40 dB (1.02)	
Environmental Conditions	-5 to +55°C (+23 to +131°F), IP60		
Code	D-IC23H	7/8" Inner Connection	

⁽³⁾ Altitude < 1500 m (4,900 ft.), Free air, Ambient temp. < 30 °C (86 °F)

Clamp Flange



FEATURES

- Easy clamp-on to Rigid Lines outers and Socket connections
- Added threads for faster and simpler nut-free connection with other flanges
- Zero and Recessed Cutback versions available

SPECIFICATIONS

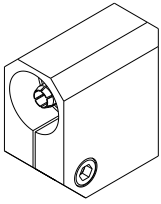
Max RMS Power ⁽³⁾	UHF	2.7 kW	(700 MHz)
	VHF B.III	4.7 kW	(230 MHz)
	VHF B.I	7.6 kW	(88 MHz)
	FM	6.9 kW	(108 MHz)
	Environmental Conditions	-5 to +55°C (+23 to +131°F), IP60	
Code	D-CF23H	7/8" <i>FastLine</i> Flange ⁽¹⁴⁾	
	D-CF23H1	7/8" Flange (8.7 mm c/back) ⁽¹⁴⁾	
Options	O-NNB.01	7/8" Flange screw set	

⁽³⁾ Altitude < 1500 m (4,900 ft.), Free air, Ambient temp. < 30 °C (86 °F)

⁽¹⁴⁾ Inner Connections not included

7/8", WX-20D Rigid Line Components

Plug Elbow



FEATURES

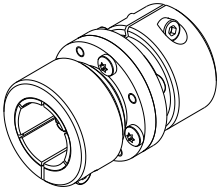
- 90° Elbow with Plugs on both sides
- Zero and Recessed Cutback versions available

SPECIFICATIONS

Max RMS Power ⁽³⁾	UHF	2.7 kW	(700 MHz)
	VHF B.III	4.7 kW	(230 MHz)
	VHF B.I	7.6 kW	(88 MHz)
	FM	6.9 kW	(108 MHz)
Return Loss (VSWR)	> 40 dB (1.02)		
Environmental Conditions	-5 to +55°C (+23 to +131°F), IP60		
Code	D-EC23I	7/8" <i>FastLine</i> Plug Elbow	
	D-EC23I1	7/8" Plug Elbow (8.7 mm c/back)	
	D-EC23I2	WX-20D Plug Elbow (1 mm c/back)	

⁽³⁾ Altitude < 1500 m (4.900 ft.), Free air, Ambient temp. < 30 °C (86 °F)

Plug Junction



FEATURES

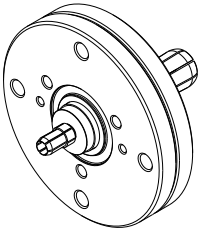
- Straight Junction with Plugs on both sides
- Zero and Recessed Cutback versions available

SPECIFICATIONS

Max RMS Power ⁽³⁾	UHF	2.7 kW	(700 MHz)
	VHF B.III	4.7 kW	(230 MHz)
	VHF B.I	7.6 kW	(88 MHz)
	FM	6.9 kW	(108 MHz)
Return Loss (VSWR)	> 40 dB (1.02)		
Environmental Conditions	-5 to +55°C (+23 to +131°F), IP60		
Code	D-JC23I	7/8" <i>FastLine</i> Plug Junction	
	D-JC23I2	WX-20D Plug Junction (1 mm c/back)	

⁽³⁾ Altitude < 1500 m (4.900 ft.), Free air, Ambient temp. < 30 °C (86 °F)

Flange to Flange Adapter



FEATURES

- Allows to connect two Flanges of different sizes
- Incorporates Inner connections
- Includes screw-set for both Flange connections

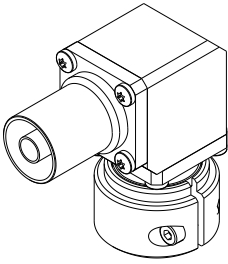
SPECIFICATIONS

Max RMS Power ⁽³⁾	UHF	2.7 kW	(700 MHz)
	VHF B.III	4.7 kW	(230 MHz)
	VHF B.I	7.6 kW	(88 MHz)
	FM	6.9 kW	(108 MHz)
Return Loss (VSWR)	> 40 dB (1.02)		
Environmental Conditions	-5 to +55°C (+23 to +131°F), IP60		
Code	D-STHK	7/8" Flange to 1+5/8" Flange	

⁽³⁾ Altitude < 1500 m (4.900 ft.), Free air, Ambient temp. < 30 °C (86 °F)

7/8", WX-20D Rigid Line Components

Modular Elbow



FEATURES

- 90° Elbow, allowing a wide choice of connections on both sides
- Zero and Recessed Cutback versions available
- Modular Connector System

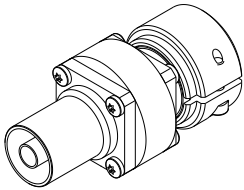
SPECIFICATIONS

Max RMS Power ⁽³⁾	UHF	2.7 kW	(700 MHz)
	VHF B.III	4.7 kW	(230 MHz)
	VHF B.I	7.6 kW	(88 MHz)
	FM	6.9 kW	(108 MHz)
Return Loss (VSWR)	> 40 dB (1.02)		
Environmental Conditions	-5 to +55°C (+23 to +131°F), IP60		
Code	D-AC32	32 mm Modular Elbow	
Connections ⁽⁸⁾	D-PC32G	7/8" <i>FastLine</i> Socket	
	D-PC32G1	7/8" Socket (8.7 mm c/back)	
	D-PCG32G2	WX-20D Socket (1 mm c/back)	
	D-PC32H	7/8" <i>FastLine</i> Flange ⁽¹⁴⁾	
	D-PC32I	7/8" <i>FastLine</i> Plug	
	D-PC32I1	7/8" Plug (8.7 mm c/back)	
	D-PC32I2	WX-20D Plug (1 mm c/back)	
Options	O-NNB.01	7/8" Flange screw set	

⁽³⁾ Altitude < 1500 m (4.900 ft.), Free air, Ambient temp. < 30 °C (86 °F)

⁽⁸⁾ Other Connections available ⁽¹⁴⁾ Inner Connections not included

Modular Junction



FEATURES

- Straight Junction, allowing a wide choice of connections on both sides.
- Zero and Recessed Cutback versions available
- Modular Connector System

SPECIFICATIONS

Max RMS Power ⁽³⁾	UHF	2.7 kW	(700 MHz)
	VHF B.III	4.7 kW	(230 MHz)
	VHF B.I	7.6 kW	(88 MHz)
	FM	6.9 kW	(108 MHz)
Return Loss (VSWR)	> 40 dB (1.02)		
Environmental Conditions	-5 to +55°C (+23 to +131°F), IP60		
Code	D-SC32	32 mm Modular Junction	
Connections ⁽⁸⁾	D-PC32G	7/8" <i>FastLine</i> Socket	
	D-PC32G1	7/8" Socket (8.7 mm c/back)	
	D-PCG32G2	WX-20D Socket (1 mm c/back)	
	D-PC32H	7/8" <i>FastLine</i> Flange ⁽¹⁴⁾	
	D-PC32I	7/8" <i>FastLine</i> Plug	
	D-PC32I1	7/8" Plug (8.7 mm c/back)	
	D-PC32I2	WX-20D Plug (1 mm c/back)	
Options	O-NNB.01	7/8" Flange screw set	

⁽³⁾ Altitude < 1500 m (4.900 ft.), Free air, Ambient temp. < 30 °C (86 °F)

⁽⁸⁾ Other Connections available ⁽¹⁴⁾ Inner Connections not included