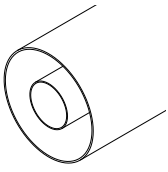


4+1/2", 4+1/16" Rigid Line Components

Rigid Line



FEATURES

- Available in Aluminum-Copper and Copper-Copper (On Request)
- 2 or 4 m (6.6 or 13.1 ft) lengths
- Rigid Line cutter available on request

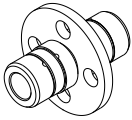
SPECIFICATIONS

Max RMS Power ⁽³⁾		Default	Painted ⁽²⁰⁾
	UHF	30.0 kW	37.0 kW (700 MHz)
	VHF B.III	52.0 kW	65.0 kW (230 MHz)
	VHF B.I	84.0 kW	105.0 kW (88 MHz)
	FM	76.0 kW	95.0 kW (108 MHz)
Outer Conductor	High Conductivity Aluminum (Default) High Conductivity Copper (On Request)		
Inner Conductor	High Conductivity Copper (ETP)		
Environmental Conditions	-5 to +55°C (+23 to +131°F), IP60		
Distance Between Inner Supports	3 m (9.8 ft)		
Available lengths	2 or 4 m (6.6 or 13.1 ft)		
Code	D-RL103O	4+1/2" Rigid Line Outer (Al)	
	D-RL103CO	4+1/2" Rigid Line Outer (Cu)	
	D-RL103I	4+1/2" Rigid Line Inner	

⁽³⁾ Altitude < 1500 m (4,900 ft.), Free air, Ambient temp. < 30 °C (86 °F)

⁽²⁰⁾ Provided unpainted; to be painted by Customer after installation

Inner Support



FEATURES

- Required to sustain the inner conductor in long Rigid Line sections

SPECIFICATIONS

Max RMS Power ⁽³⁾	UHF	37.0 kW	(700 MHz)
	VHF B.III	65.0 kW	(230 MHz)
	VHF B.I	105.0 kW	(88 MHz)
	FM	95.0 kW	(108 MHz)
	Return Loss (VSWR)	> 40 dB (1.02)	
Environmental Conditions	-5 to +55°C (+23 to +131°F), IP60		
Distance Between Inner Supports	3 m (9.8 ft)		
Code	D-IS103P	4+1/2" Inner Support	

⁽³⁾ Altitude < 1500 m (4,900 ft.), Free air, Ambient temp. < 30 °C (86 °F)

Inner Connection



FEATURES

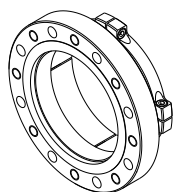
- Required to connect two Flange connections
- Includes screw-set for the relative Flange connections

SPECIFICATIONS

Max RMS Power ⁽³⁾		4+1/2"	4+1/16"
	UHF	37.0 kW	35.0 kW (700 MHz)
	VHF B.III	65.0 kW	61.0 kW (230 MHz)
	VHF B.I	105.0 kW	99.0 kW (88 MHz)
	FM	95.0 kW	89.0 kW (108 MHz)
Return Loss (VSWR)	> 40 dB (1.02)		
Environmental Conditions	-5 to +55°C (+23 to +131°F), IP60		
Code	D-IC103Q	4+1/2" Inner Connection	
	D-IC103Q6	4+1/16" Inner Connection	

⁽³⁾ Altitude < 1500 m (4,900 ft.), Free air, Ambient temp. < 30 °C (86 °F)

Clamp Flange



FEATURES

- Easy clamp-on to Rigid Lines outers and Socket connections
- Added threads for faster and simpler nut-free connection with other Flanges

SPECIFICATIONS

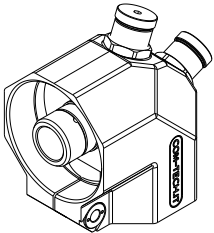
Max RMS Power ⁽³⁾		4+1/2"	4+1/16"
	UHF	37.0 kW	35.0 kW (700 MHz)
	VHF B.III	65.0 kW	61.0 kW (230 MHz)
	VHF B.I	105.0 kW	99.0 kW (88 MHz)
	FM	95.0 kW	89.0 kW (108 MHz)
Environmental Conditions	-5 to +55°C (+23 to +131°F), IP60		
Code	D-CF103Q	4+1/2" <i>FastLine</i> Flange ⁽¹⁴⁾	
	D-CF103Q6	4+1/16" <i>FastLine</i> Flange ⁽¹⁴⁾	
Options	O-NNB.04	4+1/2" / 4+1/16" Flange screw set	

⁽³⁾ Altitude < 1500 m (4,900 ft.), Free air, Ambient temp. < 30 °C (86 °F)

⁽¹⁴⁾ Inner Connections not included

4+1/2", 4+1/16" Rigid Line Components

Plug Elbow



FEATURES

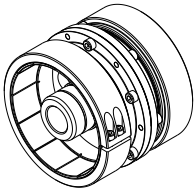
- 90° Elbow with Plugs on both sides
- Fine Match screw

SPECIFICATIONS

Max RMS Power ⁽³⁾	UHF	37.0 kW	(700 MHz)
	VHF B.III	65.0 kW	(230 MHz)
	VHF B.I	105.0 kW	(88 MHz)
	FM	95.0 kW	(108 MHz)
Return Loss (VSWR)	> 40 dB (1.02)		
Environmental Conditions	-5 to +55°C (+23 to +131°F), IP60		
Code	D-EC103R	4+1/2" <i>FastLine</i> Plug Elbow	
	D-EC103R1	4+1/2" Plug Elbow (17.3 mm c/back)	
Options	O-NFM.03	Fine-match screw (Removed)	

⁽³⁾ Altitude < 1500 m (4,900 ft.), Free air, Ambient temp. < 30 °C (86 °F)

Plug Junction



FEATURES

- Straight Junction with Plugs on both sides

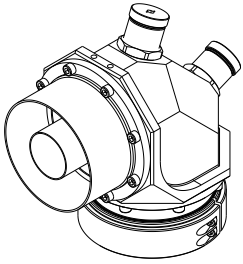
SPECIFICATIONS

Max RMS Power ⁽³⁾	UHF	37.0 kW	(700 MHz)
	VHF B.III	65.0 kW	(230 MHz)
	VHF B.I	105.0 kW	(88 MHz)
	FM	95.0 kW	(108 MHz)
Return Loss (VSWR)	> 40 dB (1.02)		
Environmental Conditions	-5 to +55°C (+23 to +131°F), IP60		
Code	D-JC103R	4+1/2" <i>FastLine</i> Plug Junction	

⁽³⁾ Altitude < 1500 m (4,900 ft.), Free air, Ambient temp. < 30 °C (86 °F)

4+1/2", 4+1/16" Rigid Line Components

Modular Elbow



FEATURES

- 90° Elbow, allowing a wide choice of connections on both sides
- Zero and Recessed Cutback versions available
- Modular Connector System

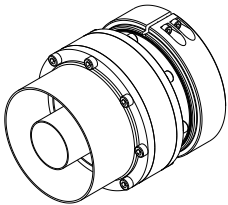
SPECIFICATIONS

Max RMS Power ⁽³⁾		4+1/2"	4+1/16"	
	UHF	37.0 kW	35.0 kW	(700 MHz)
	VHF B.III	65.0 kW	61.0 kW	(230 MHz)
	VHF B.I	105.0 kW	99.0 kW	(88 MHz)
	FM	95.0 kW	89.0 kW	(108 MHz)
Return Loss (VSWR)		> 40 dB (1.02)		
Environmental Conditions		-5 to +55°C (+23 to +131°F), IP60		
Code	D-AC130	130 mm Modular Elbow		
Connections ⁽⁸⁾	D-PC100M	3+1/8" <i>FastLine</i> Socket		
	D-PC100M1	3+1/8" Socket (17.5 mm c/back)		
	D-PC100N	3+1/8" <i>FastLine</i> Flange ⁽¹⁴⁾		
	D-PC100O	3+1/8" <i>FastLine</i> Plug		
	D-PC100O1	3+1/8" Plug (17.5 mm c/back)		
	D-PC130P	4+1/2" <i>FastLine</i> Socket		
	D-PC130P6	4+1/16" <i>FastLine</i> Socket		
	D-PC130Q	4+1/2" <i>FastLine</i> Flange ⁽¹⁴⁾		
	D-PC130Q6	4+1/16" <i>FastLine</i> Flange ⁽¹⁴⁾		
	D-PC130R	4+1/2" <i>FastLine</i> Plug		
Options	O-NNB.02	1+5/8" Flange screw set		
	O-NNB.01	7/8" Flange screw set		
	O-NFM.01	Fine-match screw removal		

⁽³⁾ Altitude < 1500 m (4,900 ft.), Free air, Ambient temp. < 30 °C (86 °F)

⁽⁸⁾ Other Connections available ⁽¹⁴⁾ Inner Connections not included

Modular Junction



FEATURES

- Straight Junction, allowing a wide choice of connections on both sides.
- Zero and Recessed Cutback versions available
- Modular Connector System

SPECIFICATIONS

Max RMS Power ⁽³⁾		4+1/2"	4+1/16"	
	UHF	37.0 kW	35.0 kW	(700 MHz)
	VHF B.III	65.0 kW	61.0 kW	(230 MHz)
	VHF B.I	105.0 kW	99.0 kW	(88 MHz)
	FM	95.0 kW	89.0 kW	(108 MHz)
Return Loss (VSWR)		> 40 dB (1.02)		
Environmental Conditions		-5 to +55°C (+23 to +131°F), IP60		
Code	D-SC130	130 mm Modular Junction		
Connections ⁽⁸⁾	D-PC100M	3+1/8" <i>FastLine</i> Socket		
	D-PC100M1	3+1/8" Socket (17.5 mm c/back)		
	D-PC100N	3+1/8" <i>FastLine</i> Flange ⁽¹⁴⁾		
	D-PC100O	3+1/8" <i>FastLine</i> Plug		
	D-PC100O1	3+1/8" Plug (17.5 mm c/back)		
	D-PC130P	4+1/2" <i>FastLine</i> Socket		
	D-PC130P6	4+1/16" <i>FastLine</i> Socket		
	D-PC130Q	4+1/2" <i>FastLine</i> Flange ⁽¹⁴⁾		
	D-PC130Q6	4+1/16" <i>FastLine</i> Flange ⁽¹⁴⁾		
	D-PC130R	4+1/2" <i>FastLine</i> Plug		
Options	O-NNB.02	1+5/8" Flange screw set		
	O-NNB.01	7/8" Flange screw set		

⁽³⁾ Altitude < 1500 m (4,900 ft.), Free air, Ambient temp. < 30 °C (86 °F)

⁽⁸⁾ Other Connections available ⁽¹⁴⁾ Inner Connections not included