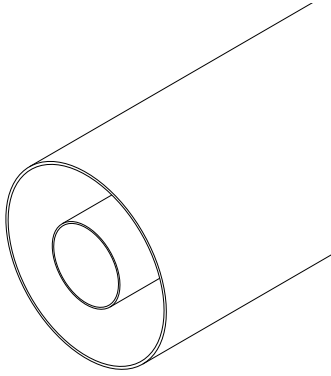


3+1/8" (WX-77D) / NAX-77D R. L. Connections

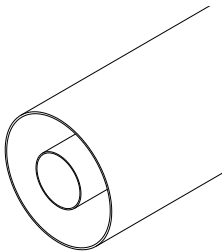
RL-77



FEATURES

- FastLine System
- Flush, Recessed and NAX/WX Cutbacks
- Direct Socket-Plug Connections
- EIA and JEITA Standard Compliant

Rigid Lines

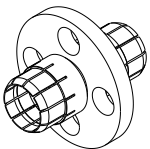


SPECIFICATIONS

Max RMS Power	Default	Painted	
	47.5 kW	60.0 kW	@ 100 MHz
	32.5 kW	42.5 kW	@ 200 MHz
	24.0 kW	30.0 kW	@ 400 MHz
	17.0 kW	21.0 kW	@ 800 MHz
Outer Conductor	High Conductivity Aluminum Alloy		
Inner Conductor	High Conductivity Copper (ETP)		
Environmental Conditions	-5 to +55°C (+23 to +131°F), IP60		
Distance Between Inner Supports	2.3 m (7.5 ft)		
Available lengths	2 or 4 m (6.6 or 13.1 ft)		
Codes	D-RL770	3+1/8" (WX-77D) Rigid Line Outer	
	D-RL7702	NAX-77D Rigid Line Outer	
	D-RL771	3+1/8" (WX-77D) Rigid Line Inner	

⁽¹⁾ @ 800 MHz

Inner Supports



SPECIFICATIONS

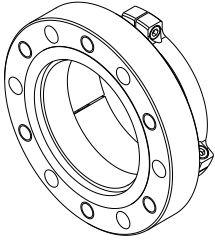
Max RMS Power	60.0 kW	@ 100 MHz
	42.5 kW	@ 200 MHz
	30.0 kW	@ 400 MHz
	21.0 kW	@ 800 MHz
Return Loss ⁽¹⁾	> 40 dB (VSWR < 1.02)	
Environmental Conditions	-5 to +55°C (+23 to +131°F), IP60	
Distance Between Inner Supports	2.3 m (7.5 ft)	
Codes	D-IS77M	3+1/8" (WX-77D) Inner Support

⁽¹⁾ @ 800 MHz

3+1/8" (WX-77D) / NAX-77D R. L. Connections

RL-77

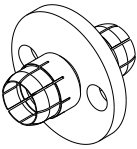
EIA Flanges



SPECIFICATIONS

Max RMS Power	60.0 kW	@ 100 MHz
	42.5 kW	@ 200 MHz
	30.0 kW	@ 400 MHz
	21.0 kW	@ 800 MHz
Environmental Conditions	-5 to +55°C (+23 to +131°F), IP60	
Codes ⁽²⁾	D-CF77N	3+1/8" EIA FastLine Flange
	D-CF77N1	3+1/8" EIA Flange (17.5 mm c/back)
Options	O-NNB.03	3+1/8" Flange nuts and bolts set
⁽¹⁾ @ 800 MHz ⁽²⁾ Inner Connections not included		

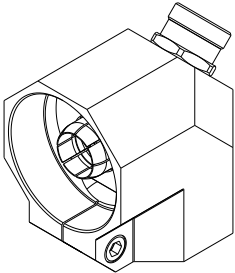
EIA Inner Connections



SPECIFICATIONS

Max RMS Power	60.0 kW	@ 100 MHz
	42.5 kW	@ 200 MHz
	30.0 kW	@ 400 MHz
	21.0 kW	@ 800 MHz
Return Loss ⁽¹⁾	> 40 dB (VSWR < 1.02)	
Environmental Conditions	-5 to +55°C (+23 to +131°F), IP60	
Codes	D-IC77N	3+1/8" EIA Inner Connection
⁽¹⁾ @ 800 MHz		

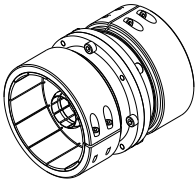
Elbows



SPECIFICATIONS

Max RMS Power	60.0 kW	@ 100 MHz
	42.5 kW	@ 200 MHz
	30.0 kW	@ 400 MHz
	21.0 kW	@ 800 MHz
Return Loss ⁽¹⁾	> 40 dB (VSWR < 1.02)	
Environmental Conditions	-5 to +55°C (+23 to +131°F), IP60	
Codes	D-EC77O	3+1/8" FastLine Elbow
	D-EC77O1	3+1/8" Elbow (17.5 mm c/back)
	D-EC77O2	NAX-77D Elbow (2 mm c/back)
	D-EC77O4	WX-77D Elbow (2 mm c/back)
Options	O-NFM.02	Fine-match screw (Removed)
⁽¹⁾ @ 800 MHz		

Junctions



SPECIFICATIONS

Max RMS Power	60.0 kW	@ 100 MHz
	42.5 kW	@ 200 MHz
	30.0 kW	@ 400 MHz
	21.0 kW	@ 800 MHz
Return Loss ⁽¹⁾	> 40 dB (VSWR < 1.02)	
Environmental Conditions	-5 to +55°C (+23 to +131°F), IP60	
Codes	D-JC77O	3+1/8" FastLine Junction
	D-JC77O1	3+1/8" Junction (17.5 mm c/back)
	D-JC77O2	NAX-77D Junction (2 mm c/back)
	D-JC77O4	WX-77D Junction (2 mm c/back)
⁽¹⁾ @ 800 MHz		